



**COMMONWEALTH OF KENTUCKY
TRANSPORTATION CABINET**
Frankfort, Kentucky 40622
www.transportation.ky.gov/

Matthew G. Bevin
Governor

Greg Thomas
Secretary

May 25, 2016

CALL NO. 104
CONTRACT ID NO. 161032
ADDENDUM # 1

Subject: Jefferson County, STP BRO 2641 (182)
Letting May 27, 2016

- (1) Revised - Plan Sheets - T1 & T6
- (2) Revised - Bid Items - Pages 137-139 of 139

Proposal revisions are available at <http://transportation.ky.gov/Construction-Procurement/>.

Plan revisions are available at <http://www.lynnimaging.com/kytransportation/>.

If you have any questions, please contact us at 502-564-3500.

Sincerely,

A handwritten signature in cursive script that reads "Rachel Mills".

Rachel Mills, P.E.
Director
Division of Construction Procurement

RM:ks
Enclosures



An Equal Opportunity Employer M/F/D

ROADWAY LIGHTING ESTIMATE OF QUANTITIES

TOTAL	UNITS	CODE	ITEM DESCRIPTION
3	EACH	4700	POLE 30' MTG HT
3	EACH	4701	POLE 40' MTG HT
4	EACH	4721	BRACKET 6'
1	EACH	4724	BRACKET 12'
1	EACH	4725	BRACKET 15'
6	EACH	4740	POLE BASE
6	EACH	4750	TRANSFORMER BASE
16	EACH	4780	FUSED CONNECTOR KIT
1,090	LIN FT	4793	CONDUIT 1 1/4 INCH
410	LIN FT	4795	CONDUIT 2 INCH
1,395	LIN FT	4820	TRENCHING AND BACKFILLING
936	LIN FT	4832	WIRE-NO. 12
3,390	LIN FT	4834	WIRE-NO. 6
3,450	LIN FT	4835	WIRE-NO. 4
1	LP SUM	4940	REMOVE LIGHTING
3	EACH	2039INS835	ELECTRICAL JUNCTION BOX TYPE A
1	LP SUM	20410ED	MAINTAIN LIGHTING
50	LIN FT	21543EN	BORE AND JACK CONDUIT
6	EACH	24589ED	LED LUMINAIRE

SUBSECTION: 04.03 BRACKET.
REVISION: REPLACE THE SECOND SENTENCE WITH THE FOLLOWING:
THE DEPARTMENT WILL NOT MEASURE ANY ASSOCIATED HARDWARE NEEDED FOR ATTACHING THE BRACKET TO THE POLE FOR PAYMENT AND WILL CONSIDER THEM INCIDENTAL TO THIS ITEM OF WORK.

SUBSECTION: 04.04 POLE BASE.
REVISION: CHANGE THE SUBSECTION HEADING TO 716.04.04 POLE BASES AND DELETE THE PARAGRAPH.
A. POLE BASE.
THE DEPARTMENT WILL MEASURE THE QUANTITY AS EACH INDIVIDUAL UNIT FURNISHED AND INSTALLED. THE DEPARTMENT WILL NOT MEASURE EXCAVATION, CONCRETE, CONDUITS, FITTINGS, GROUND RODS, GROUND WIRES, GROUND LUGS, REINFORCING STEEL, RESTORING DISTURBED AREAS TO THE SATISFACTION OF THE ENGINEER, AND ANY ASSOCIATED HARDWARE FOR PAYMENT AND WILL CONSIDER THEM INCIDENTAL TO THIS ITEM OF WORK.
B. POLE BASE HIGH MAST.
THE DEPARTMENT WILL MEASURE THE QUANTITY IN CUBIC YARDS FURNISHED AND INSTALLED. THE DEPARTMENT WILL NOT MEASURE EXCAVATION, CONCRETE, CONDUITS, FITTINGS, GROUND RODS, GROUND WIRES, GROUND LUGS, REINFORCING STEEL, RESTORING DISTURBED AREAS TO THE SATISFACTION OF THE ENGINEER, AND ANY ASSOCIATED HARDWARE FOR PAYMENT AND WILL CONSIDER THEM INCIDENTAL TO THIS ITEM OF WORK.

SUBSECTION: 04.06 TRANSFORMER BASE.
REVISION: REPLACE THE LAST SENTENCE WITH THE FOLLOWING:
THE DEPARTMENT WILL NOT MEASURE TRANSFORMER DOOR, GROUND LUG, ANCHORING BOLTS, NUTS, WASHERS, AND ANY ASSOCIATED HARDWARE FOR PAYMENT AND WILL CONSIDER THEM INCIDENTAL TO THIS ITEM OF WORK. THE FILLING OF ANY UNUSED HOLES WILL ALSO BE CONSIDERED INCIDENTAL TO THIS ITEM OF WORK.

SUBSECTION: 04.09 LUMINAIRE.
REVISION: REPLACE THE PARAGRAPH WITH THE FOLLOWING:
THE DEPARTMENT WILL MEASURE THE QUANTITY AS EACH INDIVIDUAL UNIT FURNISHED AND INSTALLED. THE DEPARTMENT WILL NOT MEASURE LAMPS, STARTERS, BALLASTS, DRIVERS, SURGE PROTECTION, DIMMING MODULES, PHOTO-CONTROL RECEPTACLE, SPECIFIED SHIELDING (IF REQUIRED), AND ANY ADJUSTMENTS NECESSARY TO PROVIDE THE DESIRED LIGHTING PATTERN FOR PAYMENT AND WILL CONSIDER THEM INCIDENTAL TO THIS ITEM OF WORK.

SUBSECTION: 04.10 FUSED CONNECTOR KITS.
REVISION: REPLACE THE HEADING WITH THE FOLLOWING:
716.04.10 FUSE CONNECTOR KITS.
REPLACE THE PARAGRAPH WITH THE FOLLOWING:
THE DEPARTMENT WILL MEASURE THE QUANTITY AS EACH INDIVIDUAL UNIT FURNISHED AND INSTALLED. THE DEPARTMENT WILL NOT MEASURE FUSES/LUGS FOR PAYMENT AND WILL CONSIDER THEM INCIDENTAL TO THIS ITEM OF WORK.

SUBSECTION: 04.11 CONDUITS.
REVISION: REPLACE THE SECOND SENTENCE WITH THE FOLLOWING:
THE DEPARTMENT WILL NOT MEASURE INSTALLATION IN GROUND OR ON STRUCTURES, CONDUIT FITTINGS, TEST PLUGS, EXPANSION JOINTS WITH BONDING STRAPS, GROUNDING LUGS, DRILL ANCHORS, CLAMPS, AND ANY ADDITIONAL HARDWARE REQUIRED FOR PAYMENT AND WILL CONSIDER THEM INCIDENTAL TO THIS ITEM OF WORK.

SUBSECTION: 04.13 ELECTRICAL JUNCTION BOX TYPE VARIOUS.
REVISION: REPLACE THE SECTION WITH THE FOLLOWING:
THE DEPARTMENT WILL MEASURE THE QUANTITY AS EACH INDIVIDUAL UNIT FURNISHED AND INSTALLED. THE DEPARTMENT WILL NOT MEASURE ADDITIONAL JUNCTION BOXES FOR GREATER DEPTHS THAN THOSE IDENTIFIED IN PLANS, #57 AGGREGATE, BACKFILLING, RESTORATION OF DISTURBED AREAS TO THE SATISFACTION OF THE ENGINEER, GEOTEXTILE FILTER FABRIC, CONCRETE, HOT DIPPED GALVANIZED COVER, STAINLESS STEEL SCREWS, RUBBER GASKET, AND ANY ASSOCIATED HARDWARE FOR PAYMENT , AND WILL CONSIDER THEM INCIDENTAL TO THIS ITEM OF WORK.

SUBSECTION: 04.13 PART A JUNCTION ELECTRICAL. DELETE PART A.

SUBSECTION: 04.14 TRENCHING AND BACKFILLING.
REVISION: REPLACE THE SECTION WITH THE FOLLOWING:
THE DEPARTMENT WILL MEASURE THE QUANTITY IN LINEAR FEET. THE DEPARTMENT WILL NOT MEASURE EXCAVATION, BACKFILLING, UNDERGROUND UTILITY WARNING TAPE (IF REQUIRED), AND THE RESTORATION OF DISTURBED AREAS TO ORIGINAL CONDITION FOR PAYMENT AND WILL CONSIDER THEM INCIDENTAL TO THIS ITEM OF WORK.

SUBSECTION: 04.15 WIRE OR CABLE.
REVISION: REPLACE THE SECTION WITH THE FOLLOWING:
THE DEPARTMENT WILL MEASURE THE QUANTITY IN LINEAR FEET FURNISHED AND INSTALLED. THE DEPARTMENT WILL NOT MEASURE INSTALLATION WITHIN CONDUIT, SPLICE BOOTS, AND ANY OTHER HARDWARE REQUIRED FOR INSTALLING CABLE FOR PAYMENT AND WILL CONSIDER THEM INCIDENTAL TO THIS ITEM OF WORK.

SUBSECTION: 04.17 TEMPORARY LIGHTING/MAINTAIN LIGHTING.
REVISION: REPLACE ENTIRE NOTE WITH THE FOLLOWING:
A) TEMPORARY LIGHTING.
THE DEPARTMENT WILL MEASURE THE QUANTITY BY LUMP SUM. THE DEPARTMENT WILL NOT MEASURE POLES, LUMINAIRES, WIRE, CONDUIT, TRENCHING AND BACKFILLING, CONTROL EQUIPMENT, ALL RELOCATIONS AND REMOVAL, DESIGN (IF REQUIRED), AND ANY OTHER NECESSARY HARDWARE TO MAKE A COMPLETE INSTALLATION FOR PAYMENT AND WILL CONSIDER THEM INCIDENTAL TO THIS ITEM OF WORK.
B) MAINTAIN LIGHTING.
THE DEPARTMENT WILL MEASURE THE QUANTITY BY LUMP SUM. THE DEPARTMENT WILL NOT MEASURE MAINTENANCE OF LIGHTING ELEMENTS AND DESIGN (IF REQUIRED) FOR PAYMENT AND WILL CONSIDER THEM INCIDENTAL TO THIS ITEM OF WORK.

SUBSECTION: 4.18 REMOVE LIGHTING. (CONSTRUCTION ONLY)
REVISION: REPLACE THE PARAGRAPH WITH THE FOLLOWING:
THE DEPARTMENT WILL MEASURE THE QUANTITY BY LUMP SUM. THE DEPARTMENT WILL NOT MEASURE BACKFILLING AND THE DISPOSAL OR TRANSPORTATION OF EQUIPMENT AND MATERIALS ASSOCIATED WITH ANY STRUCTURAL OR ELECTRICAL COMPONENT OF THE LIGHTING SYSTEM INCLUDING, BUT NOT LIMITED TO POLE BASES, POLES, JUNCTION BOXES, CABINETS, AND WOOD POLES FOR PAYMENT AND WILL CONSIDER THEM INCIDENTAL TO THIS ITEM OF WORK.

SUBSECTION: 04.19 REMOVE POLE BASE.
REVISION: REMOVE ENTIRE NOTE AND BID ITEM.

SUBSECTION: 04.20 BORE AND JACK CONDUIT.
REVISION: RENUMBER SUBSECTION TO 716.04.19 BORE AND JACK CONDUIT.
REPLACE THE PARAGRAPH WITH THE FOLLOWING: THE DEPARTMENT WILL MEASURE THE QUANTITY IN LINEAR FEET. THIS ITEM SHALL INCLUDE ALL WORK NECESSARY FOR BORING AND INSTALLING CONDUIT UNDER AN EXISTING ROADWAY.

THE STANDARD SPECIFICATIONS FOR ROAD AND BRIDGE CONSTRUCTION, CURRENT EDITION, AND OTHER SPECIAL NOTES AND SPECIFICATIONS WILL APPLY ON THIS PROJECT. SEE SECTION 716 FOR MEASUREMENT AND OTHER DETAILS. SEE SECTION 602 FOR SPIRAL REINFORCEMENT SPLICING

THE CONTRACTOR SHALL MAKE AN INSPECTION OF THE PROJECT SITE PRIOR TO SUBMITTING A BID AND SHALL BE THOROUGHLY FAMILIARIZED WITH EXISTING CONDITIONS. SUBMISSIONS OF A BID WILL BE CONSIDERED AN AFFIRMATION OF THIS INSPECTION HAVING BEEN COMPLETED.

CONSTRUCTION AND MEASUREMENT NOTES THAT ARE CONTRARY TO SECTION 716

SUBSECTION: 03.02 LIGHTING STANDARD INSTALLATION.
REVISION: REPLACE ENTIRE FOURTH SENTENCE IN FIRST PARAGRAPH:
IF ANY POLE NEEDS TO BE RELOCATED FROM STATIONS INDICATED, THE DIVISION OF TRAFFIC OPERATIONS SHALL BE CONTACTED.

SUBSECTION: 03.03 TRENCHING.
REVISION: REMOVE ENTIRE FOURTH SENTENCE IN FIRST PARAGRAPH:
NO PAYMENT FOR ADDITIONAL JUNCTION BOXES FOR GREATER DEPTHS WILL BE ALLOWED.

SUBSECTION: 03.04 CONDUIT INSTALLATION.
REVISION: ADD THE FOLLOWING TO THE PART TO THE SUBSECTION:
G) BORE AND JACK. CONSTRUCTION METHODS SHALL BE IN ACCORDANCE WITH SUBSECTIONS 706.03.02, PARAGRAPHS 1, 2 AND 4.

SUBSECTION: 03.10 JUNCTION BOXES.
REVISION: REPLACE SUBSECTION TITLE WITH THE FOLLOWING:
ELECTRICAL JUNCTION BOX AND
REPLACE THE LAST SENTENCE OF THE PARAGRAPH WITH THE FOLLOWING:
ANY ADDITIONAL JUNCTION BOXES SHALL BE APPROVED BY THE ENGINEER.

SUBSECTION: 03.13 TEMPORARY LIGHTING.
REVISION: CHANGE SUBSECTION HEADING TO THE FOLLOWING:
716.03.13 TEMPORARY/MAINTAIN LIGHTING.
REPLACE THE ENTIRE SECTION WITH THE FOLLOWING:
THE CONTRACTOR SHALL FURNISH AND INSTALL ALL MATERIALS NECESSARY TO TEMPORARILY LIGHT THE PROPOSED ROADWAY TO DESIGN STANDARDS IN SUBSECTION 716.03. THE CONTRACTOR SHALL SUBMIT HIS PROPOSED DESIGN OF TEMPORARY LIGHTING TO THE DIVISION OF TRAFFIC OPERATIONS FOR APPROVAL AT LEAST 30 DAYS BEFORE INSTALLATION. MAINTAIN ALL LIGHTING ELEMENTS IMPACTED WITHIN OR OUTSIDE THE PROJECT LIMITS UNTIL NEW LIGHTING ELEMENTS ARE INSTALLED AND A FUNCTIONAL INSPECTION HAS BEEN PERFORMED ON THE NEW LIGHTING ELEMENTS. THE CONTRACTOR SHALL SUBMIT A PROPOSED DESIGN FOR MAINTAINING LIGHTING TO THE DIVISION OF TRAFFIC OPERATIONS FOR APPROVAL AT LEAST 30 DAYS BEFORE INSTALLATION.

SUBSECTION: 03.14 REMOVE LIGHTING.
REVISION: REPLACE ENTIRE NOTE WITH THE FOLLOWING:
REMOVE ALL LIGHTING EQUIPMENT THAT IS IDENTIFIED BY THE ENGINEER AS NO LONGER NECESSARY INCLUDING, BUT NOT LIMITED TO, THE FOLLOWING: POLE BASES, POLES, JUNCTION BOXES, CABINETS, AND WOOD POLES. POLE BASES SHALL BE REMOVED A MINIMUM OF ONE FOOT BELOW FINISHED GRADE BY CHIPPING OFF OR OTHER METHOD THAT IS APPROVED BY THE ENGINEER. DISPOSE OF ALL REMOVED CONCRETE OFF RIGHT-OF-WAY. WOOD POLES SHALL BE REMOVED A MINIMUM OF ONE FOOT BELOW FINISHED GRADE. BACKFILL HOLES WITH MATERIAL APPROVED BY THE ENGINEER. CONDUIT MAY BE ABANDONED IN THE GROUND. ALL MATERIALS SHALL BE REMOVED FROM THE PROJECT AS DIRECTED BY THE ENGINEER. TRANSFORMERS NOT OWNED BY A UTILITY SHALL BE TESTED FOR PCB'S AND DISPOSED OF IN ACCORDANCE WITH STATE REGULATIONS.

SUBSECTION: 04.01 POLES.
REVISION: REPLACE THE LAST SENTENCE OF THE SUBSECTION WITH THE FOLLOWING:
THE DEPARTMENT WILL NOT MEASURE ANCHOR BOLTS, WASHERS, NUTS, ANCHOR BOLT COVERS, GROUND LUGS, AND ANY ASSOCIATED HARDWARE FOR PAYMENT AND WILL CONSIDER THEM INCIDENTAL TO THIS ITEM OF WORK.

8-5-2015

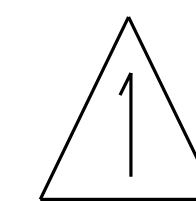
FILE NAME: G:\USERS\SHANNON.RIDDLE\DESKTOP\RESHEET\FOLDER\TO100SU.DGN

USER: shannon.riddle
DATE PLOTTED: May 25, 2016

E-SHEET NAME: TO100SU

MicroStation v8.11.7.443

DESIGNED BY: CW, Revision SR
DATE SUBMITTED: 5/24/2016
Commonwealth of Kentucky DEPARTMENT OF HIGHWAYS COUNTY OF JEFFERSON
PROJECT: FD52 056 0264 000-001
NUMBERS:
ROADWAY LIGHTING ESTIMATES OF QUANTITIES



ROADWAY LIGHTING ESTIMATE OF QUANTITIES

TOTAL	UNITS	CODE	ITEM DESCRIPTION
3	EACH	4700	POLE 30' MTG HT
3	EACH	4701	POLE 40' MTG HT
4	EACH	4721	BRACKET 6'
1	EACH	4724	BRACKET 12'
1	EACH	4725	BRACKET 15'
6	EACH	4740	POLE BASE
6	EACH	4750	TRANSFORMER BASE
16	EACH	4780	FUSED CONNECTOR KIT
1,090	LIN FT	4793	CONDUIT 1 1/4 INCH
410	LIN FT	4795	CONDUIT 2 INCH
1,395	LIN FT	4820	TRENCHING AND BACKFILLING
936	LIN FT	4832	WIRE-NO. 12
3,390	LIN FT	4834	WIRE-NO. 6
3,450	LIN FT	4835	WIRE-NO. 4
1	LP SUM	4940	REMOVE LIGHTING
3	EACH	2039INS835	ELECTRICAL JUNCTION BOX TYPE A
1	LP SUM	20410ED	MAINTAIN LIGHTING
50	LIN FT	21543EN	BORE AND JACK CONDUIT
6	EACH	24589ED	LED LUMINAIRE

QUANTITIES REDUCED DUE TO JUNCTION BOXES AND CODUITS ARE INCLUDED IN STRUCTURAL PLANS

THE STANDARD SPECIFICATIONS FOR ROAD AND BRIDGE CONSTRUCTION, CURRENT EDITION, AND OTHER SPECIAL NOTES AND SPECIFICATIONS WILL APPLY ON THIS PROJECT. SEE SECTION 716 FOR MEASUREMENT AND OTHER DETAILS. SEE SECTION 602 FOR SPIRAL REINFORCEMENT SPLICING

THE CONTRACTOR SHALL MAKE AN INSPECTION OF THE PROJECT SITE PRIOR TO SUBMITTING A BID AND SHALL BE THOROUGHLY FAMILIARIZED WITH EXISTING CONDITIONS. SUBMISSIONS OF A BID WILL BE CONSIDERED AN AFFIRMATION OF THIS INSPECTION HAVING BEEN COMPLETED.

CONSTRUCTION AND MEASUREMENT NOTES THAT ARE CONTRARY TO SECTION 716

SUBSECTION: 03.02 LIGHTING STANDARD INSTALLATION.
REVISION: REPLACE ENTIRE FOURTH SENTENCE IN FIRST PARAGRAPH; IF ANY POLE NEEDS TO BE RELOCATED FROM STATIONS INDICATED, THE DIVISION OF TRAFFIC OPERATIONS SHALL BE CONTACTED.

SUBSECTION: 03.03 TRENCHING.
REVISION: REMOVE ENTIRE FOURTH SENTENCE IN FIRST PARAGRAPH; NO PAYMENT FOR ADDITIONAL JUNCTION BOXES FOR GREATER DEPTHS WILL BE ALLOWED.

SUBSECTION: 03.04 CONDUIT INSTALLATION.
REVISION: ADD THE FOLLOWING TO THE PART TO THE SUBSECTION: G) BORE AND JACK. CONSTRUCTION METHODS SHALL BE IN ACCORDANCE WITH SUBSECTIONS 706.03.02, PARAGRAPHS 1, 2 AND 4.

SUBSECTION: 03.10 JUNCTION BOXES.
REVISION: REPLACE SUBSECTION TITLE WITH THE FOLLOWING: ELECTRICAL JUNCTION BOX AND REPLACE THE LAST SENTENCE OF THE PARAGRAPH WITH THE FOLLOWING: ANY ADDITIONAL JUNCTION BOXES SHALL BE APPROVED BY THE ENGINEER.

SUBSECTION: 03.13 TEMPORARY LIGHTING.
REVISION: CHANGE SUBSECTION HEADING TO THE FOLLOWING: 716.03.13 TEMPORARY/MAINTAIN LIGHTING. REPLACE THE ENTIRE SECTION WITH THE FOLLOWING: THE CONTRACTOR SHALL FURNISH AND INSTALL ALL MATERIALS NECESSARY TO TEMPORARILY LIGHT THE PROPOSED ROADWAY TO DESIGN STANDARDS IN SUBSECTION 716.03. THE CONTRACTOR SHALL SUBMIT HIS PROPOSED DESIGN OF TEMPORARY LIGHTING TO THE DIVISION OF TRAFFIC OPERATIONS FOR APPROVAL AT LEAST 30 DAYS BEFORE INSTALLATION. MAINTAIN ALL LIGHTING ELEMENTS IMPACTED WITHIN OR OUTSIDE THE PROJECT LIMITS UNTIL NEW LIGHTING ELEMENTS ARE INSTALLED AND A FUNCTIONAL INSPECTION HAS BEEN PERFORMED ON THE NEW LIGHTING ELEMENTS. THE CONTRACTOR SHALL SUBMIT A PROPOSED DESIGN FOR MAINTAINING LIGHTING TO THE DIVISION OF TRAFFIC OPERATIONS FOR APPROVAL AT LEAST 30 DAYS BEFORE INSTALLATION.

SUBSECTION: 03.14 REMOVE LIGHTING.
REVISION: REPLACE ENTIRE NOTE WITH THE FOLLOWING: REMOVE ALL LIGHTING EQUIPMENT THAT IS IDENTIFIED BY THE ENGINEER AS NO LONGER NECESSARY INCLUDING, BUT NOT LIMITED TO, THE FOLLOWING: POLE BASES, POLES, JUNCTION BOXES, CABINETS, AND WOOD POLES. POLE BASES SHALL BE REMOVED A MINIMUM OF ONE FOOT BELOW FINISHED GRADE BY CHIPPING OFF OR OTHER METHOD THAT IS APPROVED BY THE ENGINEER. DISPOSE OF ALL REMOVED CONCRETE OFF RIGHT-OF-WAY. WOOD POLES SHALL BE REMOVED A MINIMUM OF ONE FOOT BELOW FINISHED GRADE. BACKFILL HOLES WITH MATERIAL APPROVED BY THE ENGINEER. CONDUIT MAY BE ABANDONED IN THE GROUND. ALL MATERIALS SHALL BE REMOVED FROM THE PROJECT AS DIRECTED BY THE ENGINEER. TRANSFORMERS NOT OWNED BY A UTILITY SHALL BE TESTED FOR PCB'S AND DISPOSED OF IN ACCORDANCE WITH STATE REGULATIONS.

SUBSECTION: 04.01 POLES.
REVISION: REPLACE THE LAST SENTENCE OF THE SUBSECTION WITH THE FOLLOWING: THE DEPARTMENT WILL NOT MEASURE ANCHOR BOLTS, WASHERS, NUTS, ANCHOR BOLT COVERS, GROUND LUGS, AND ANY ASSOCIATED HARDWARE FOR PAYMENT AND WILL CONSIDER THEM INCIDENTAL TO THIS ITEM OF WORK.

SUBSECTION: 04.03 BRACKET.
REVISION: REPLACE THE SECOND SENTENCE WITH THE FOLLOWING: THE DEPARTMENT WILL NOT MEASURE ANY ASSOCIATED HARDWARE NEEDED FOR ATTACHING THE BRACKET TO THE POLE FOR PAYMENT AND WILL CONSIDER THEM INCIDENTAL TO THIS ITEM OF WORK.

SUBSECTION: 04.04 POLE BASE.
REVISION: CHANGE THE SUBSECTION HEADING TO 716.04.04 POLE BASES AND DELETE THE PARAGRAPH. A. POLE BASE. THE DEPARTMENT WILL MEASURE THE QUANTITY AS EACH INDIVIDUAL UNIT FURNISHED AND INSTALLED. THE DEPARTMENT WILL NOT MEASURE EXCAVATION, CONCRETE, CONDUITS, FITTINGS, GROUND RODS, GROUND WIRES, GROUND LUGS, REINFORCING STEEL, RESTORING DISTURBED AREAS TO THE SATISFACTION OF THE ENGINEER, AND ANY ASSOCIATED HARDWARE FOR PAYMENT AND WILL CONSIDER THEM INCIDENTAL TO THIS ITEM OF WORK. B. POLE BASE HIGH MAST. THE DEPARTMENT WILL MEASURE THE QUANTITY IN CUBIC YARDS FURNISHED AND INSTALLED. THE DEPARTMENT WILL NOT MEASURE EXCAVATION, CONCRETE, CONDUITS, FITTINGS, GROUND RODS, GROUND WIRES, GROUND LUGS, REINFORCING STEEL, RESTORING DISTURBED AREAS TO THE SATISFACTION OF THE ENGINEER, AND ANY ASSOCIATED HARDWARE FOR PAYMENT AND WILL CONSIDER THEM INCIDENTAL TO THIS ITEM OF WORK.

SUBSECTION: 04.06 TRANSFORMER BASE.
REVISION: REPLACE THE LAST SENTENCE WITH THE FOLLOWING: THE DEPARTMENT WILL NOT MEASURE TRANSFORMER DOOR, GROUND LUG, ANCHORING BOLTS, NUTS, WASHERS, AND ANY ASSOCIATED HARDWARE FOR PAYMENT AND WILL CONSIDER THEM INCIDENTAL TO THIS ITEM OF WORK. THE FILLING OF ANY UNUSED HOLES WILL ALSO BE CONSIDERED INCIDENTAL TO THIS ITEM OF WORK.

SUBSECTION: 04.09 LUMINAIRE.
REVISION: REPLACE THE PARAGRAPH WITH THE FOLLOWING: THE DEPARTMENT WILL MEASURE THE QUANTITY AS EACH INDIVIDUAL UNIT FURNISHED AND INSTALLED. THE DEPARTMENT WILL NOT MEASURE LAMPS, STARTERS, BALLASTS, DRIVERS, SURGE PROTECTION, DIMMING MODULES, PHOTO-CONTROL RECEPTACLE, SPECIFIED SHIELDING (IF REQUIRED), AND ANY ADJUSTMENTS NECESSARY TO PROVIDE THE DESIRED LIGHTING PATTERN FOR PAYMENT AND WILL CONSIDER THEM INCIDENTAL TO THIS ITEM OF WORK.

SUBSECTION: 04.10 FUSED CONNECTOR KITS.
REVISION: REPLACE THE HEADING WITH THE FOLLOWING: 716.04.10 FUSE CONNECTOR KITS. REPLACE THE PARAGRAPH WITH THE FOLLOWING: THE DEPARTMENT WILL MEASURE THE QUANTITY AS EACH INDIVIDUAL UNIT FURNISHED AND INSTALLED. THE DEPARTMENT WILL NOT MEASURE FUSES/LUGS FOR PAYMENT AND WILL CONSIDER THEM INCIDENTAL TO THIS ITEM OF WORK.

SUBSECTION: 04.11 CONDUITS.
REVISION: REPLACE THE SECOND SENTENCE WITH THE FOLLOWING: THE DEPARTMENT WILL NOT MEASURE INSTALLATION IN GROUND OR ON STRUCTURES, CONDUIT FITTINGS, TEST PLUGS, EXPANSION JOINTS WITH BONDING STRAPS, GROUNDING LUGS, DRILL ANCHORS, CLAMPS, AND ANY ADDITIONAL HARDWARE REQUIRED FOR PAYMENT AND WILL CONSIDER THEM INCIDENTAL TO THIS ITEM OF WORK.

SUBSECTION: 04.13 ELECTRICAL JUNCTION BOX TYPE VARIOUS.
REVISION: REPLACE THE SECTION WITH THE FOLLOWING: THE DEPARTMENT WILL MEASURE THE QUANTITY AS EACH INDIVIDUAL UNIT FURNISHED AND INSTALLED. THE DEPARTMENT WILL NOT MEASURE ADDITIONAL JUNCTION BOXES FOR GREATER DEPTHS THAN THOSE IDENTIFIED IN PLANS, #57 AGGREGATE, BACKFILLING, RESTORATION OF DISTURBED AREAS TO THE SATISFACTION OF THE ENGINEER, GEOTEXTILE FILTER FABRIC, CONCRETE, HOT DIPPED GALVANIZED COVER, STAINLESS STEEL SCREWS, RUBBER GASKET, AND ANY ASSOCIATED HARDWARE FOR PAYMENT , AND WILL CONSIDER THEM INCIDENTAL TO THIS ITEM OF WORK.

SUBSECTION: 04.13 PART A JUNCTION ELECTRICAL. DELETE PART A.

SUBSECTION: 04.14 TRENCHING AND BACKFILLING.
REVISION: REPLACE THE SECTION WITH THE FOLLOWING: THE DEPARTMENT WILL MEASURE THE QUANTITY IN LINEAR FEET. THE DEPARTMENT WILL NOT MEASURE EXCAVATION, BACKFILLING, UNDERGROUND UTILITY WARNING TAPE (IF REQUIRED), AND THE RESTORATION OF DISTURBED AREAS TO ORIGINAL CONDITION FOR PAYMENT AND WILL CONSIDER THEM INCIDENTAL TO THIS ITEM OF WORK.

SUBSECTION: 04.15 WIRE OR CABLE.
REVISION: REPLACE THE SECTION WITH THE FOLLOWING: THE DEPARTMENT WILL MEASURE THE QUANTITY IN LINEAR FEET FURNISHED AND INSTALLED. THE DEPARTMENT WILL NOT MEASURE INSTALLATION WITHIN CONDUIT, SPLICE BOOTS, AND ANY OTHER HARDWARE REQUIRED FOR INSTALLING CABLE FOR PAYMENT AND WILL CONSIDER THEM INCIDENTAL TO THIS ITEM OF WORK.

SUBSECTION: 04.17 TEMPORARY LIGHTING/MAINTAIN LIGHTING.
REVISION: REPLACE ENTIRE NOTE WITH THE FOLLOWING: A) TEMPORARY LIGHTING. THE DEPARTMENT WILL MEASURE THE QUANTITY BY LUMP SUM. THE DEPARTMENT WILL NOT MEASURE POLES, LUMINAIRES, WIRE, CONDUIT, TRENCHING AND BACKFILLING, CONTROL EQUIPMENT, ALL RELOCATIONS AND REMOVAL, DESIGN (IF REQUIRED), AND ANY OTHER NECESSARY HARDWARE TO MAKE A COMPLETE INSTALLATION FOR PAYMENT AND WILL CONSIDER THEM INCIDENTAL TO THIS ITEM OF WORK. B) MAINTAIN LIGHTING. THE DEPARTMENT WILL MEASURE THE QUANTITY BY LUMP SUM. THE DEPARTMENT WILL NOT MEASURE MAINTENANCE OF LIGHTING ELEMENTS AND DESIGN (IF REQUIRED) FOR PAYMENT AND WILL CONSIDER THEM INCIDENTAL TO THIS ITEM OF WORK.

SUBSECTION: 4.18 REMOVE LIGHTING. (CONSTRUCTION ONLY)
REVISION: REPLACE THE PARAGRAPH WITH THE FOLLOWING: THE DEPARTMENT WILL MEASURE THE QUANTITY BY LUMP SUM. THE DEPARTMENT WILL NOT MEASURE BACKFILLING AND THE DISPOSAL OR TRANSPORTATION OF EQUIPMENT AND MATERIALS ASSOCIATED WITH ANY STRUCTURAL OR ELECTRICAL COMPONENT OF THE LIGHTING SYSTEM INCLUDING, BUT NOT LIMITED TO POLE BASES, POLES, JUNCTION BOXES, CABINETS, AND WOOD POLES FOR PAYMENT AND WILL CONSIDER THEM INCIDENTAL TO THIS ITEM OF WORK.

SUBSECTION: 04.19 REMOVE POLE BASE.
REVISION: REMOVE ENTIRE NOTE AND BID ITEM.

SUBSECTION: 04.20 BORE AND JACK CONDUIT.
REVISION: RENUMBER SUBSECTION TO 716.04.19 BORE AND JACK CONDUIT. REPLACE THE PARAGRAPH WITH THE FOLLOWING: THE DEPARTMENT WILL MEASURE THE QUANTITY IN LINEAR FEET. THIS ITEM SHALL INCLUDE ALL WORK NECESSARY FOR BORING AND INSTALLING CONDUIT UNDER AN EXISTING ROADWAY.

FILE NAME: G:\USERS\SHANNON.RIDDLE\DESKTOP\KESHHEET\FOLDER\T00100SU.DGN

USER: shannon.riddle
DATE PLOTTED: May 25, 2016

E-SHEET NAME: T00100SU

MicroStation v8.11.7.443

DESIGNED BY: CW, Revision SR
DATE SUBMITTED: 5/24/2016
Commonwealth of Kentucky DEPARTMENT OF HIGHWAYS COUNTY OF JEFFERSON
PROJECT: FD52 056 0264 000-001
NUMBERS:
ROADWAY LIGHTING ESTIMATES OF QUANTITIES

GENERAL CONVENTIONAL NOTES:

ALL SPLICES NOTED ON THIS PLAN SHALL BE APPROVED BY CENTRAL OFFICE TRAFFIC OPERATIONS. THESE SPLICES SHALL BE WATERPROOF AND SHALL BE OF THE CORRECT SIZE FOR THE WIRE USED AND SHALL BE RAYCHEM GTAP-2(B18), OR APPROVED EQUAL. ALL SPLICES SHALL BE INCIDENTAL TO THE WIRE AND CABLE BEING INSTALLED.

CONVENTIONAL LIGHTING:

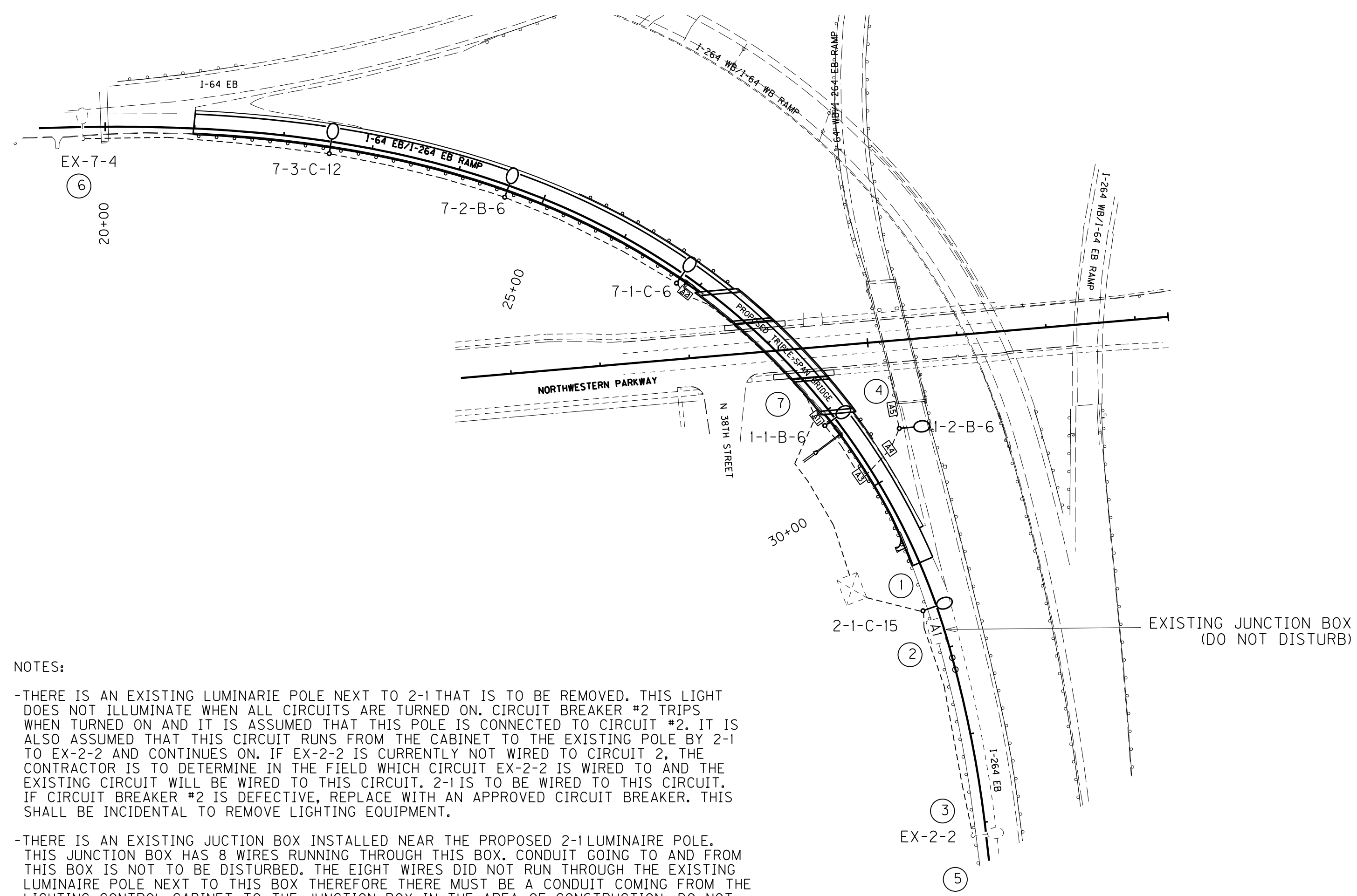
ALL POLES SHALL HAVE A #12 AWG GREEN GROUND WIRE RUN FROM BOTTOM OF POLE TO THE LUMINAIRE FOR GROUNDING. ALL POLES SHALL HAVE A GREEN WIRE THE SAME SIZE AS THE CIRCUIT WIRE RUN FROM POLE TO POLE FOR GROUNDING. GROUNDING WIRES SHALL BE CONNECTED TO GROUNDING LUGS ON CONDUITS OR ON THE POLE/TRANSFORMER BASE.

POLE HEIGHTS, ARM LENGTHS AND SETBACKS ARE DENOTED AS STATED ON 'LUMINAIRE DESIGNATION EXAMPLE' ON LUMINAIRE/FUSE CONNECTOR DETAIL SHEET.

POLES SHALL BE PLACED AS CLOSE TO STATIONS AS STATED ON PLANS TO PROVIDE PROPER ILLUMINATION. IF ANY POLE NEEDS TO BE MOVED FROM THE STATION INDICATED, C.O. TRAFFIC SHALL BE CONTACTED AT 502-564-3020.

WIRING SCHEDULE				
CKT #1	FROM	TO	WIRE SIZE	CONDUIT SIZE
CKT #1	CONTROLLER	JBA1-OTHER	3-*6 AWG	2" RS
	JBA1-OTHER	1-1	3-*6 AWG	2" RS
	1-1	JBA5 (THRU JBA3, JBA4, 1-2)	3-*6 AWG	2" RS
CKT #2	CONTROLLER	2-1	3-*6 AWG	1/4" RS
	2-1	EX-2-2	3-*6 AWG	1/4" RS
CKT #X-1	CONTROLLER	JBA5 (THRU JBA1-OTHER, 1-1, JBA3, JBA4, 1-2)	3-*6 AWG	2" RS
CKT #7	CONTROLLER	JBA1-OTHER	3-*4 AWG	2" RS
	JBA1-OTHER	JBA2-OTHER	3-*4 AWG	2" RS BY OTHERS
	JBA2-OTHER	EX-7-4 (THRU 7-1, 7-2, 7-3)	3-*4 AWG	1/4" RS

LUMINAIRES	STATIONS	ALIGNMENT
1-1	Sta 29+12.07 Off 10.91	5-1073 BRIDGE
1-2	Sta 29+62.19 Off 53.39	5-1073 BRIDGE
2-1	Sta 31+52.40 Off 14.32	5-1073 BRIDGE
7-1	Sta 26+77.11 Off 10.73	5-1073 BRIDGE
7-2	Sta 24+58.16 Off 11.74	5-1073 BRIDGE
7-3	Sta 22+53.19 Off 11.26	5-1073 BRIDGE



NOTES:

- ① -THERE IS AN EXISTING LUMINAIRE POLE NEXT TO 2-1 THAT IS TO BE REMOVED. THIS LIGHT DOES NOT ILLUMINATE WHEN ALL CIRCUITS ARE TURNED ON. CIRCUIT BREAKER #2 TRIPS WHEN TURNED ON AND IT IS ASSUMED THAT THIS POLE IS CONNECTED TO CIRCUIT #2. IT IS ALSO ASSUMED THAT THIS CIRCUIT RUNS FROM THE CABINET TO THE EXISTING POLE BY 2-1 TO EX-2-2 AND CONTINUES ON. IF EX-2-2 IS CURRENTLY NOT WIRED TO CIRCUIT 2, THE CONTRACTOR IS TO DETERMINE IN THE FIELD WHICH CIRCUIT EX-2-2 IS WIRED TO AND THE EXISTING CIRCUIT WILL BE WIRED TO THIS CIRCUIT. 2-1 IS TO BE WIRED TO THIS CIRCUIT. IF CIRCUIT BREAKER #2 IS DEFECTIVE, REPLACE WITH AN APPROVED CIRCUIT BREAKER. THIS SHALL BE INCIDENTAL TO REMOVE LIGHTING EQUIPMENT.
- ② -THERE IS AN EXISTING JUNCTION BOX INSTALLED NEAR THE PROPOSED 2-1 LUMINAIRE POLE. THIS JUNCTION BOX HAS 8 WIRES RUNNING THROUGH THIS BOX. CONDUIT GOING TO AND FROM THIS BOX IS NOT TO BE DISTURBED. THE EIGHT WIRES DID NOT RUN THROUGH THE EXISTING LUMINAIRE POLE NEXT TO THIS BOX THEREFORE THERE MUST BE A CONDUIT COMING FROM THE LIGHTING CONTROL CABINET TO THE JUNCTION BOX IN THE AREA OF CONSTRUCTION. DO NOT DISTURB THIS CONDUIT.
- ③ -THE 8 WIRES COMING FROM THE EXISTING JUNCTION BOX TO AREA AROUND EX-2-2 DO NOT RUN THROUGH POLE EX-2-2. SIX OF THE WIRES DETOUR AROUND THE POLE TO A NEAR BY JUNCTION BOX. DO NOT DISTURB THESE WIRES AND CONDUIT WHEN TRENCHING FROM 2-1 TO EX-2-2.
- ④ -LOCATE EXISTING JUNCTION BOX NEAR BRIDGE. REMOVE EXISTING JUNCTION BOX WITHOUT DISTURBING WIRE AND CONDUIT GOING TO BRIDGE. INSTALL NEW JUNCTION BOX IN THIS LOCATION. APPEARS TO BE TWO CIRCUITS INSIDE THIS BOX. SPLICE CIRCUIT #1 TO THE EXISTING CIRCUIT INSIDE JUNCTION BOX THAT WAS PREVIOUSLY CONNECTED TO THE EXISTING LUMINAIRE POLE BY 1-2. IT IS UNKNOWN WHAT THE OTHER CIRCUIT DESIGNATION IS RUNNING THROUGH THIS JUNCTION BOX. CONTRACTOR IS TO DETERMINE WHAT CIRCUIT THIS IS IN THE FIELD AND RUN NEW WIRE TO THIS BOX PER WIRING SCHEDULE CKT #X-1. SPLICE NEW WIRE TO EXISTING. ALL WIRE SHALL BE SPLICED WITH AN APPROVED SPLICE KIT.
- ⑤ -LOCATE EXISTING CONDUIT GOING TO TRANSFORMER BASE OF POLE EX-2-2 AND RUN NEW WIRE THROUGH THAT EXISTING CONDUIT. SPLICE NEW 2-*6 AWG WIRE TO EXISTING WIRE OF CIRCUIT 2 USING TWO NEW FUSED CONNECTOR KITS IN TRANSFORMER BASE OF POLE EX-2-2. CONNECT THE THIRD WIRE TO EXISTING GROUND.
- ⑥ -LOCATE EXISTING CONDUIT GOING TO TRANSFORMER BASE OF POLE EX-7-4 AND RUN NEW WIRE THROUGH THAT EXISTING CONDUIT. SPLICE NEW 2-*4 AWG WIRE TO EXISTING WIRE OF CIRCUIT 7 USING TWO NEW FUSED CONNECTOR KITS IN TRANSFORMER BASE OF POLE EX-7-4. CONNECT THE THIRD WIRE TO EXISTING GROUND.

Scale 1" = 100'

LEGEND

- EXISTING POLE MOUNTED LIGHTING CABINET
- JUNCTION BOXES - TYPE A (AS DESIGNATED)
- 1/4" RIGID STEEL CONDUIT (UNLESS OTHERWISE NOTED)
- LUMINAIRE POLE
- EXISTING JUNCTION BOX
- SEE 'NOTES'
- EXISTING LUMINAIRE POLE
- OTHER JUNCTION BOXES - TYPE A (AS DESIGNATED)

LIGHTING PLAN SHEET
I-64 EB @ I-256 EB RAMP

FILE NAME: G:\USERS\SHANNON.RIDDLE\DESKTOP\RESHEET\FOLDER\T01600LT.DGN

USER: shannon.riddle

DATE PLOTTED: January 1, 0001

E-SHEET NAME: T01600LT

MicroStation v8.11.7.443

GENERAL CONVENTIONAL NOTES:

ALL SPLICES NOTED ON THIS PLAN SHALL BE APPROVED BY CENTRAL OFFICE TRAFFIC OPERATIONS. THESE SPLICES SHALL BE WATERPROOF AND SHALL BE OF THE CORRECT SIZE FOR THE WIRE USED AND SHALL BE RAYCHEM GTAP-2(B18), OR APPROVED EQUAL. ALL SPLICES SHALL BE INCIDENTAL TO THE WIRE AND CABLE BEING INSTALLED.

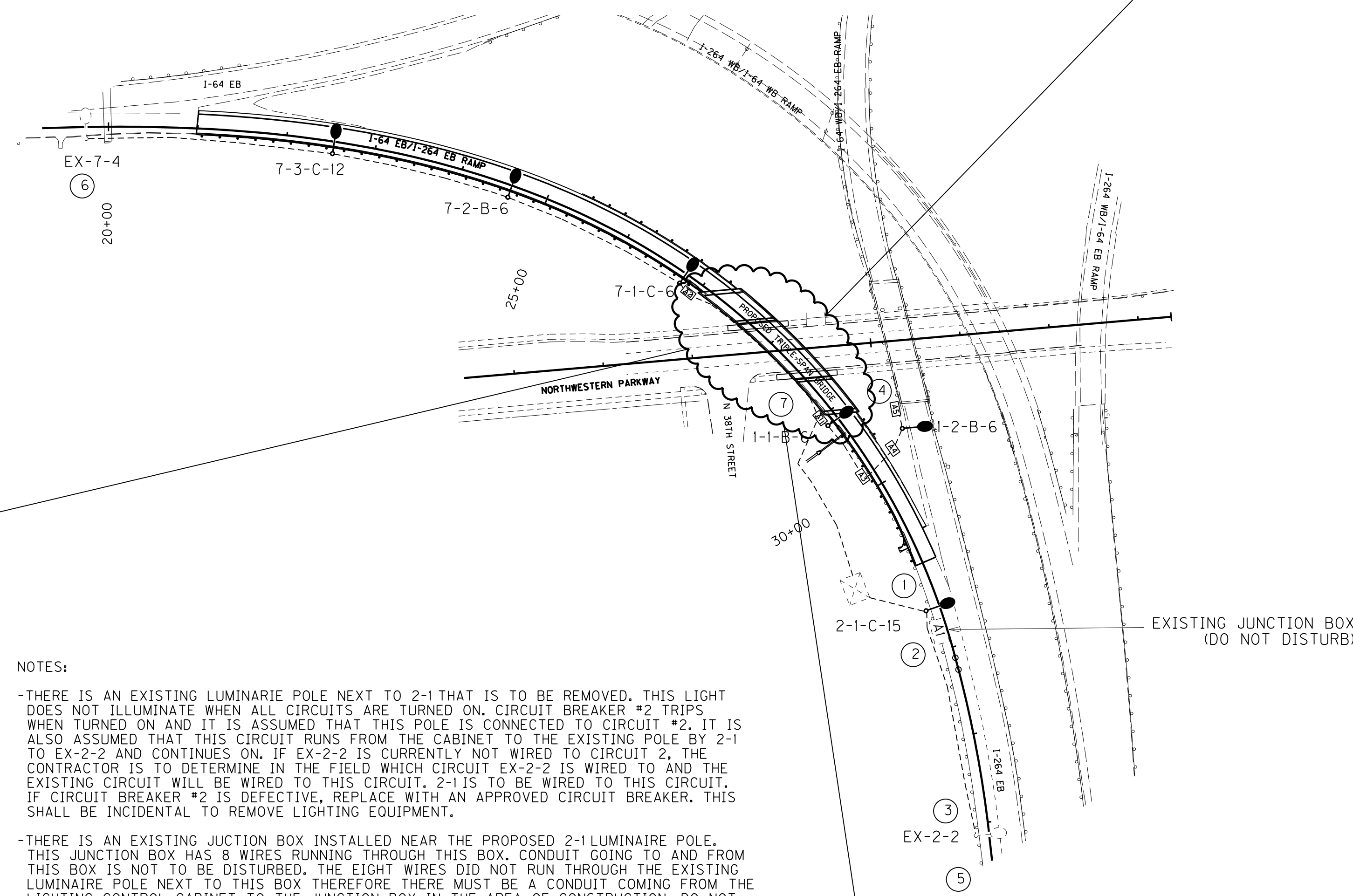
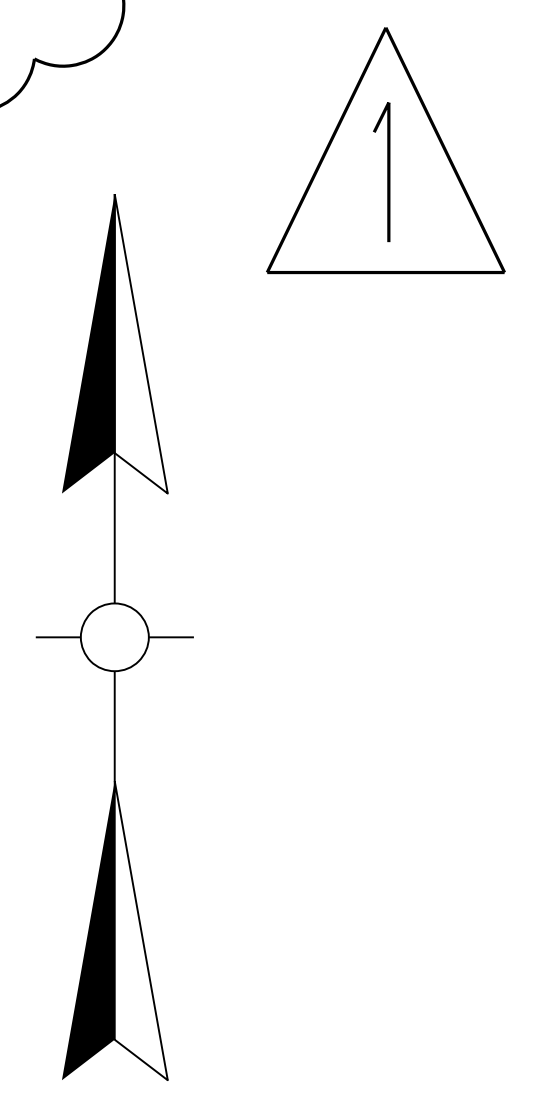
CONVENTIONAL LIGHTING:

ALL POLES SHALL HAVE A #12 AWG GREEN GROUND WIRE RUN FROM BOTTOM OF POLE TO THE LUMINAIRE FOR GROUNDING. ALL POLES SHALL HAVE A GREEN WIRE THE SAME SIZE AS THE CIRCUIT WIRE RUN FROM POLE TO POLE FOR GROUNDING. GROUNDING WIRES SHALL BE CONNECTED TO GROUNDING LUGS ON CONDUITS OR ON THE POLE/TRANSFORMER BASE.

POLE HEIGHTS, ARM LENGTHS AND SETBACKS ARE DENOTED AS STATED ON 'LUMINAIRE DESIGNATION EXAMPLE' ON LUMINAIRE/FUSE CONNECTOR DETAIL SHEET.

POLES SHALL BE PLACED AS CLOSE TO STATIONS AS STATED ON PLANS TO PROVIDE PROPER ILLUMINATION. IF ANY POLE NEEDS TO BE MOVED FROM THE STATION INDICATED, C.O. TRAFFIC SHALL BE CONTACTED AT 502-564-3020.

JUNCTION BOXES "A1 & A2" ALONG WITH CONDUIT ALONG BRIDGE ARE A PART OF THE STRUCTURAL PLANS & ITS QUANTITIES.



WIRING SCHEDULE			
CKT #1	FROM	TO	CONDUIT SIZE
CKT #1	CONTROLLER	JBA1-OTHER	2" RS
	JBA1-OTHER	1-1	2" RS
	1-1	JBA5 (THRU JBA3, JBA4, 1-2)	2" RS
CKT #2	CONTROLLER	2-1	1 1/4" RS
	2-1	EX-2-2	1 1/4" RS
CKT #X-1	CONTROLLER	JBA5 (THRU JBA1-OTHER, 1-1, JBA3, JBA4, 1-2)	2" RS
CKT #7	CONTROLLER	JBA1-OTHER	2" RS
	JBA1-OTHER	JBA2-OTHER	2" RS BY OTHERS
	JBA2-OTHER	EX-7-4 (THRU 7-1, 7-2, 7-3)	1 1/4" RS

LUMINAIRES	STATIONS	ALIGNMENT
1-1	Sta 29+12.07 Off 10.91	5-1073 BRIDGE
1-2	Sta 29+62.19 Off 53.39	5-1073 BRIDGE
2-1	Sta 31+52.40 Off 14.32	5-1073 BRIDGE
7-1	Sta 26+77.11 Off 10.73	5-1073 BRIDGE
7-2	Sta 24+58.16 Off 11.74	5-1073 BRIDGE
7-3	Sta 22+53.19 Off 11.26	5-1073 BRIDGE

NOTES:

- ① -THERE IS AN EXISTING LUMINAIRE POLE NEXT TO 2-1 THAT IS TO BE REMOVED. THIS LIGHT DOES NOT ILLUMINATE WHEN ALL CIRCUITS ARE TURNED ON. CIRCUIT BREAKER #2 TRIPS WHEN TURNED ON AND IT IS ASSUMED THAT THIS POLE IS CONNECTED TO CIRCUIT #2. IT IS ALSO ASSUMED THAT THIS CIRCUIT RUNS FROM THE CABINET TO THE EXISTING POLE BY 2-1 TO EX-2-2 AND CONTINUES ON. IF EX-2-2 IS CURRENTLY NOT WIRED TO CIRCUIT 2, THE CONTRACTOR IS TO DETERMINE IN THE FIELD WHICH CIRCUIT EX-2-2 IS WIRED TO AND THE EXISTING CIRCUIT WILL BE WIRED TO THIS CIRCUIT. 2-1 IS TO BE WIRED TO THIS CIRCUIT. IF CIRCUIT BREAKER #2 IS DEFECTIVE, REPLACE WITH AN APPROVED CIRCUIT BREAKER. THIS SHALL BE INCIDENTAL TO REMOVE LIGHTING EQUIPMENT.
- ② -THERE IS AN EXISTING JUNCTION BOX INSTALLED NEAR THE PROPOSED 2-1 LUMINAIRE POLE. THIS JUNCTION BOX HAS 8 WIRES RUNNING THROUGH THIS BOX. CONDUIT GOING TO AND FROM THIS BOX IS NOT TO BE DISTURBED. THE EIGHT WIRES DID NOT RUN THROUGH THE EXISTING LUMINAIRE POLE NEXT TO THIS BOX THEREFORE THERE MUST BE A CONDUIT COMING FROM THE LIGHTING CONTROL CABINET TO THE JUNCTION BOX IN THE AREA OF CONSTRUCTION. DO NOT DISTURB THIS CONDUIT.
- ③ -THE 8 WIRES COMING FROM THE EXISTING JUNCTION BOX TO AREA AROUND EX-2-2 DO NOT RUN THROUGH POLE EX-2-2. SIX OF THE WIRES DETOUR AROUND THE POLE TO A NEAR BY JUNCTION BOX. DO NOT DISTURB THESE WIRES AND CONDUIT WHEN TRENCHING FROM 2-1 TO EX-2-2.
- ④ -LOCATE EXISTING JUNCTION BOX NEAR BRIDGE. REMOVE EXISTING JUNCTION BOX WITHOUT DISTURBING WIRE AND CONDUIT GOING TO BRIDGE. INSTALL NEW JUNCTION BOX IN THIS LOCATION. APPEARS TO BE TWO CIRCUITS INSIDE THIS BOX. SPLICE CIRCUIT #1 TO THE EXISTING CIRCUIT INSIDE JUNCTION BOX THAT WAS PREVIOUSLY CONNECTED TO THE EXISTING LUMINAIRE POLE BY 1-2. IT IS UNKNOWN WHAT THE OTHER CIRCUIT DESIGNATION IS RUNNING THROUGH THIS JUNCTION BOX. CONTRACTOR IS TO DETERMINE WHAT CIRCUIT THIS IS IN THE FIELD AND RUN NEW WIRE TO THIS BOX PER WIRING SCHEDULE CKT #X-1. SPLICE NEW WIRE TO EXISTING. ALL WIRE SHALL BE SPLICED WITH AN APPROVED SPLICE KIT.
- ⑤ -LOCATE EXISTING CONDUIT GOING TO TRANSFORMER BASE OF POLE EX-2-2 AND RUN NEW WIRE THROUGH THAT EXISTING CONDUIT. SPLICE NEW 2-#6 AWG WIRE TO EXISTING WIRE OF CIRCUIT 2 USING TWO NEW FUSED CONNECTOR KITS IN TRANSFORMER BASE OF POLE EX-2-2. CONNECT THE THIRD WIRE TO EXISTING GROUND.
- ⑥ -LOCATE EXISTING CONDUIT GOING TO TRANSFORMER BASE OF POLE EX-7-4 AND RUN NEW WIRE THROUGH THAT EXISTING CONDUIT. SPLICE NEW 2-#4 AWG WIRE TO EXISTING WIRE OF CIRCUIT 7 USING TWO NEW FUSED CONNECTOR KITS IN TRANSFORMER BASE OF POLE EX-7-4. CONNECT THE THIRD WIRE TO EXISTING GROUND.
- ⑦ -INSTALL 2" CONDUIT ALONG SIDE OF BRIDGE. CONDUIT SHALL BE CONNECTED TO BRIDGE EVERY 4 FEET. CONTRACTOR SHALL GET APPROVAL FOR TYPE OF CONNECTOR BEING USED. TRANSITION TO AND FROM BRIDGE THROUGH JUNCTION BOX JBA1 AND JBA2.

Scale 1" = 100'

LEGEND

- EXISTING POLE MOUNTED LIGHTING CABINET
- JUNCTION BOXES - TYPE A (AS DESIGNATED)
- 1 1/4" RIGID STEEL CONDUIT (UNLESS OTHERWISE NOTED)
- LUMINAIRE POLE
- EXISTING JUNCTION BOX
- SEE 'NOTES'
- EXISTING LUMINAIRE POLE
- OTHER JUNCTION BOXES - TYPE A (AS DESIGNATED)

LIGHTING PLAN SHEET
I-64 EB @ I-256 EB RAMP

FILE NAME: G:\USERS\SHANNON.RIDDLE\DESKTOP\RESHEET\FOLDER\T00600L.T.DGN
 USER: shannon.riddle
 DATE PLOTTED: May 25, 2016
 E-SHEET NAME: T00600L.T
 MicroStation v8.11.7.443

PROPOSAL BID ITEMS

161032

Report Date 5/25/16

Section: 0001 - PAVING

LINE	BID CODE	ALT	DESCRIPTION	QUANTITY	UNIT	UNIT PRIC	FP	AMOUNT
0010	00001		DGA BASE	1,361.00	TON		\$	
0020	00005		GEOGRID REINFORCEMENT FOR SUBGRADE	2,598.00	SQYD		\$	
0030	00018		DRAINAGE BLANKET-TYPE II-ASPH	558.00	TON		\$	
0040	00100		ASPHALT SEAL AGGREGATE	4.40	TON		\$	
0050	00103		ASPHALT SEAL COAT	.53	TON		\$	
0060	00214		CL3 ASPH BASE 1.00D PG64-22	1,078.00	TON		\$	
0070	00216		CL3 ASPH BASE 1.00D PG76-22	519.00	TON		\$	
0080	00336		CL3 ASPH SURF 0.38A PG76-22	193.00	TON		\$	
0090	02599		FABRIC-GEOTEXTILE TYPE IV	2,514.00	SQYD		\$	

Section: 0002 - ROADWAY

LINE	BID CODE	ALT	DESCRIPTION	QUANTITY	UNIT	UNIT PRIC	FP	AMOUNT
0100	00078		CRUSHED AGGREGATE SIZE NO 2	4.00	TON		\$	
0110	01890		ISLAND HEADER CURB TYPE 1	100.00	LF		\$	
0120	01897		ASPHALT WEDGE CURB	732.00	LF		\$	
0130	01982		DELINEATOR FOR GUARDRAIL MONO DIRECTIONAL WHITE	8.00	EACH		\$	
0140	01983		DELINEATOR FOR GUARDRAIL MONO DIRECTIONAL YELLOW	5.00	EACH		\$	
0150	01984		DELINEATOR FOR BARRIER - WHITE	35.00	EACH		\$	
0160	01985		DELINEATOR FOR BARRIER - YELLOW	5.00	EACH		\$	
0170	02200		ROADWAY EXCAVATION	1,390.00	CUYD		\$	
0180	02265		REMOVE FENCE	200.00	LF		\$	
0190	02274		FENCE-6 FT CHAIN LINK	200.00	LF		\$	
0200	02351		GUARDRAIL-STEEL W BEAM-S FACE	1,037.50	LF		\$	
0210	02363		GUARDRAIL CONNECTOR TO BRIDGE END TY A	2.00	EACH		\$	
0220	02367		GUARDRAIL END TREATMENT TYPE 1	1.00	EACH		\$	
0230	02369		GUARDRAIL END TREATMENT TYPE 2A	1.00	EACH		\$	
0240	02381		REMOVE GUARDRAIL	1,000.00	LF		\$	
0250	02387		GUARDRAIL CONNECTOR TO BRIDGE END TY A-1	2.00	EACH		\$	
0260	02562		TEMPORARY SIGNS	1,708.00	SQFT		\$	
0270	02600		FABRIC GEOTEXTILE TY IV FOR PIPE	44.00	SQYD	\$2.00	\$	\$88.00
0280	02650		MAINTAIN & CONTROL TRAFFIC	1.00	LS		\$	
0290	02671		PORTABLE CHANGEABLE MESSAGE SIGN	2.00	EACH		\$	
0300	02696		SHOULDER RUMBLE STRIPS-SAWED	1,600.00	LF		\$	
0310	02701		TEMP SILT FENCE	1,150.00	LF		\$	
0320	02705		SILT TRAP TYPE C	3.00	EACH		\$	
0330	02708		CLEAN SILT TRAP TYPE C	3.00	EACH		\$	
0340	02720		SIDEWALK-4 IN CONCRETE	12.00	SQYD		\$	
0350	02726		STAKING	1.00	LS		\$	
0360	02731		REMOVE STRUCTURE	1.00	LS		\$	
0370	02775		ARROW PANEL	2.00	EACH		\$	
0380	02900		INSTALL TEMP CRASH CUSHION	1.00	EACH		\$	
0390	03171		CONCRETE BARRIER WALL TYPE 9T	600.00	LF		\$	

PROPOSAL BID ITEMS

REVISED ADDENDUM #1: 5-25-16

161032

Page 2 of 3

Report Date 5/25/16

LINE	BID CODE	ALT	DESCRIPTION	QUANTITY	UNIT	UNIT PRIC	FP	AMOUNT
0400	05950		EROSION CONTROL BLANKET	50.00	SQYD		\$	
0410	05952		TEMP MULCH	1,807.00	SQYD		\$	
0420	05953		TEMP SEEDING AND PROTECTION	1,355.00	SQYD		\$	
0430	05963		INITIAL FERTILIZER	.10	TON		\$	
0440	05964		20-10-10 FERTILIZER	.10	TON		\$	
0450	05985		SEEDING AND PROTECTION	977.00	SQYD		\$	
0460	05989		SPECIAL SEEDING CROWN VETCH	2,000.00	SQYD		\$	
0470	05990		SODDING	31.00	SQYD		\$	
0480	05992		AGRICULTURAL LIMESTONE	4.00	TON		\$	
0490	06515		PAVE STRIPING-PERM PAINT-6 IN	2,002.00	LF		\$	
0500	06593		PAVEMENT MARKER TYPE V-B Y/R	25.00	EACH		\$	
0510	20430ED		SAW CUT	55.00	LF		\$	
0520	21370ED		LONGITUDINAL SAW CUT- 6 IN	36.00	LF		\$	
0530	24128EC		PLASTIC CONSTRUCTION/SAFETY FENCING 6' MINIMUM HEIGHT	300.00	LF		\$	

Section: 0003 - DRAINAGE

LINE	BID CODE	ALT	DESCRIPTION	QUANTITY	UNIT	UNIT PRIC	FP	AMOUNT
0540	00521		STORM SEWER PIPE-15 IN	42.00	LF		\$	
0550	01000		PERFORATED PIPE-4 IN	788.00	LF		\$	
0560	01010		NON-PERFORATED PIPE-4 IN	40.00	LF		\$	
0570	01020		PERF PIPE HEADWALL TY 1-4 IN	4.00	EACH		\$	
0580	01202		PIPE CULVERT HEADWALL-15 IN	1.00	EACH		\$	
0590	01480		CURB BOX INLET TYPE B	2.00	EACH		\$	
0600	01691		FLUME INLET TYPE 2	1.00	EACH		\$	

Section: 0004 - BRIDGE

LINE	BID CODE	ALT	DESCRIPTION	QUANTITY	UNIT	UNIT PRIC	FP	AMOUNT
0610	01643		JUNCTION BOX-24 IN	2.00	EACH		\$	
0620	02231		STRUCTURE GRANULAR BACKFILL	238.10	CUYD		\$	
0630	02998		MASONRY COATING	1,090.00	SQYD		\$	
0640	03299		ARMORED EDGE FOR CONCRETE	79.90	LF		\$	
0650	04797		CONDUIT-3 IN	211.00	LF		\$	
0660	08001		STRUCTURE EXCAVATION-COMMON	420.00	CUYD		\$	
0670	08016		REINF CONC SLOPE WALL-6 IN	535.00	SQYD		\$	
0680	08033		TEST PILES	441.00	LF		\$	
0690	08051		PILES-STEEL HP14X89	3,777.00	LF		\$	
0700	08095		PILE POINTS-14 IN	40.00	EACH		\$	
0710	08100		CONCRETE-CLASS A	266.60	CUYD		\$	
0720	08104		CONCRETE-CLASS AA	277.20	CUYD		\$	
0730	08150		STEEL REINFORCEMENT	27,315.00	LB		\$	
0740	08151		STEEL REINFORCEMENT-EPOXY COATED	74,542.00	LB		\$	
0750	20391NS835		ELECTRICAL JUNCTION BOX TYPE A	2.00	EACH		\$	
0760	21532ED		RAIL SYSTEM TYPE III	390.30	LF		\$	
0770	23963EC		PPC I-BEAM TYPE HN36-49	760.40	LF		\$	

PROPOSAL BID ITEMS

REVISED ADDENDUM #1: 5-25-16

161032

Page 3 of 3

Report Date 5/25/16

Section: 0005 - LIGHTING

LINE	BID CODE	ALT	DESCRIPTION	QUANTITY	UNIT	UNIT PRIC	FP	AMOUNT
0780	04700		POLE 30 FT MTG HT	3.00	EACH		\$	
0790	04701		POLE 40 FT MTG HT	3.00	EACH		\$	
0800	04721		BRACKET 6 FT	4.00	EACH		\$	
0810	04724		BRACKET 12 FT	1.00	EACH		\$	
0820	04725		BRACKET 15 FT	1.00	EACH		\$	
0830	04740		POLE BASE	6.00	EACH		\$	
0840	04750		TRANSFORMER BASE	6.00	EACH		\$	
0850	04780		FUSED CONNECTOR KIT	16.00	EACH		\$	
0860	04793		CONDUIT-1 1/4 IN	1,090.00	LF		\$	
0870	04795		CONDUIT-2 IN (REVISED: 5-25-16)	410.00	LF		\$	
0880	04820		TRENCHING AND BACKFILLING	1,395.00	LF		\$	
0890	04832		WIRE-NO. 12	936.00	LF		\$	
0900	04834		WIRE-NO. 6	3,390.00	LF		\$	
0910	04835		WIRE-NO. 4	3,450.00	LF		\$	
0920	04940		REMOVE LIGHTING	1.00	LS		\$	
0930	20391NS835		ELECTRICAL JUNCTION BOX TYPE A (REVISED: 5-25-16)	3.00	EACH		\$	
0940	20410ED		MAINTAIN LIGHTING	1.00	LS		\$	
0950	21543EN		BORE AND JACK CONDUIT	50.00	LF		\$	
0960	24589ED		LED LUMINAIRE	6.00	EACH		\$	

Section: 0006 - DEMOBILIZATION &/OR MOBILIZATION

LINE	BID CODE	ALT	DESCRIPTION	QUANTITY	UNIT	UNIT PRIC	FP	AMOUNT
0970	02569		DEMOBILIZATION	1.00	LS		\$	